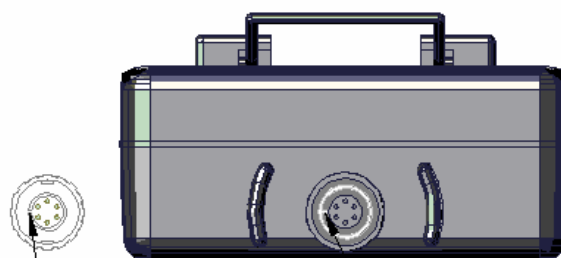


Mating and Unmating the Special Projects Wireless 6-pin Connector (SP.31)

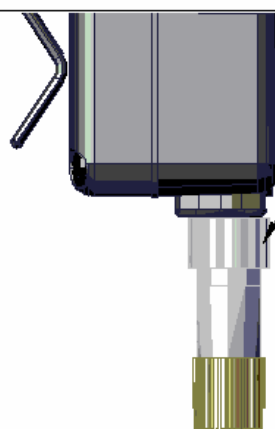


IMPORTANT:

Cable must be attached before body pack is placed in the water to be waterproof!



Slot in connector needs to line up with key on receptacle.



Once Connector is mated onto receptacle, twist the locking collar (Clockwise) only, to lock in place.

When removing the plug from its connected condition, hold the locking collar only and twist counter-clockwise. Then pull straight off for easy removal. Not doing so may cause damage.